



34 Cornwallis Court Liverpool

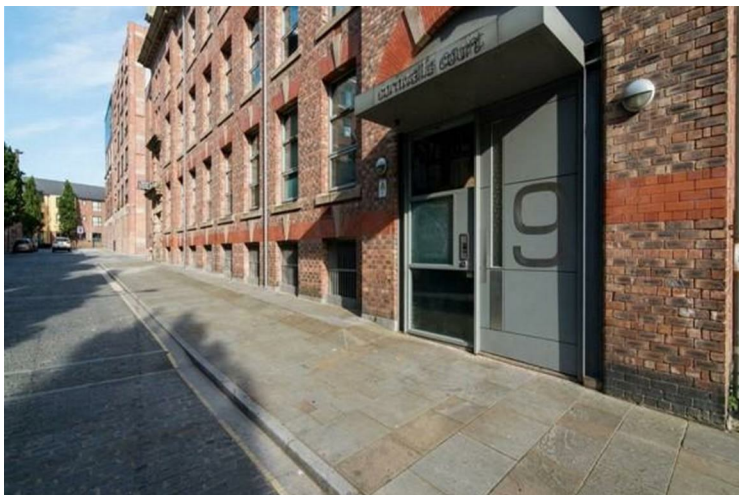
£1,400 PCM

Mistoria are pleased to offer this 3-Bedroom Penthouse in the Heart of Liverpool City Centre – Available for Rent

This stunning 3-bedroom penthouse offers a unique opportunity to live in one of the most prestigious locations in Liverpool. Located in the vibrant city centre, this contemporary residence boasts breathtaking views, modern amenities, and stylish interiors, ideal for those seeking a high-end urban lifestyle.

Key Features:

- **Spacious Living:** The open-plan living and dining area features large windows that flood the space with natural light, creating a bright and airy atmosphere. The panoramic city views provide a spectacular backdrop for entertaining or relaxing.
- **Three Double Bedrooms:** The penthouse offers three generously sized double bedrooms. The master bedroom benefits from an en-suite bathroom, providing a private sanctuary.
- **Private Terrace:** Enjoy your own outdoor space with a welcoming, private terrace, perfect for alfresco dining, or simply unwinding while soaking in the views of the city skyline.
- **Prime Location:** Situated in the heart of Liverpool, you are just moments away from all the best the city has to offer, including the renowned Liverpool One shopping centre, world-class restaurants,



- Central Heating • Wooden Floors • Fitted Kitchen • Intercom • Alarm • Shower • Balcony • City Centre • Master Bedroom with Ensuite Bathroom • 3 Bedrooms

Full Description

Mistoria are pleased to offer this luxury 3rd floor fully furnished 3 bedroom penthouse apartment. The property comprises of 3 double bedroom, en suite, spacious living area, fully fitted kitchen and family bathroom with a Jacuzzi bath.

The property also benefits a balcony, wooden flooring, electric heating, alarm and comes with a secure underground parking space. This apartment is situated at the top of Duke Street close to Liverpool One and all local amenities.

With apartments that offer the ultimate in City Centre Style, space, light and glamour abound. There a strong chance you may not even want to leave the sumptuous confines of this stunning residential development. But when you do you will find yourself in the core of the city merely a step away from the hugely cosmopolitan yet constantly evolving breadth of amenities. Situated in the historic Rope Walks are of the city - offering an eclectic mix of Georgian charm, cobbled streets paired with state of the art contemporary architecture, you will love the locality - its upbeat vibe with a Bohemian feel and sense of diversity. You can have all your needs met here, achieve your wildest dreams. There is a tangible, momentous buzz in the air. With prime retail, leisure and cultural elements on your doorstep you can facilitate your desires for a rich, abundant and stress free existence.

Property has 1 designated parking spot.

Please contact Mistoria Liverpool on 0151 2821539 and speak to our friendly staff who will be able to provide you with all the information required and potentially







Energy Efficiency Rating		
	Current	Potential
Very energy efficient - lower running costs		
(92 plus) A		
(81-91) B		81
(69-80) C	66	
(55-68) D		
(39-54) E		
(21-38) F		
(1-20) G		
Not energy efficient - higher running costs		
England & Wales		EU Directive 2002/91/EC

Agents Note: Whilst every care has been taken to prepare these particulars, they are for guidance purposes only. All measurements are approximate and are for general guidance purposes only and whilst every care has been taken to ensure their accuracy, they should not be relied upon and potential buyers/tenants are advised to recheck the measurements

Pall Mall Liverpool Mistoria
22 Pall Mall
Liverpool
L3 6AL

0151 282 1539
info@mistoria.co.uk
mistoria.co.uk

